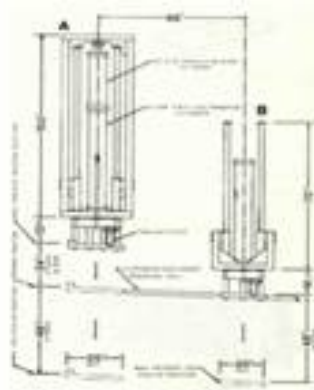




SECOND LEG TRANSFER UNIT



DESCRIPTION

Single cylinder transfer unit permits first hind legger to share labor with a second worker. After skinning the second leg, a trolley is inserted and set on the rail section attached to the transfer unit and raised to match the dressing rail height. When installed in other kill floor areas, unit may be used to lower quarters or sides.

BENEFITS

- + Increases rate of kill

PRODUCT FEATURES

- + 48" stroke air cylinder
- + Hand valve
- + Combination air filter, lubricator and regulator for 90 to 100 p.s.i. working air pressure
- + Painted finish

TECHNICAL DATA

Weight

500-lbs.

UltraSource LLC
1414 West 29th Street
Kansas City, MO 64108-3604 USA

800-777-5624

Telephone: (816) 753-2150
Fax: (816) 753-4976
E-mail: info@UltraSourceUSA.com
Web Site: UltraSourceUSA.com



UltraSource®